

## Business Tips Workshop

If you run a business or are thinking about starting a business, register to join the NZI Rural Women New Zealand Business award winners and finalists at the Business Tips Workshop session. Hear from Rural Women New Zealand Chief Executive Officer, Penelope England, NZI, MBIE and other industry experts on finances, strategy, social media, recruiting and retaining good staff, governance and more.

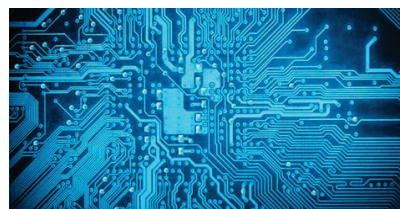
## Policy Workshops

Held at Victoria University Law School, Old Government Buildings.

**Social:** RWNZ National Chair, Penny Mudford will lead discussion on wrap-around support – what does it look like and mean, and how do we do it? With input from MPI Mycoplasma bovis Response Manager, David Wansbrough; HortNZ Chief Executive, Mike Chapman on PSA recovery, and; Te Puni Kōkiri Chief Advisor, Nancy Tuaine speaking on Whanau Ora.



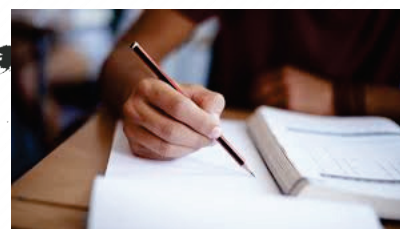
**Technology:** TUANZ CEO, Craig Young will facilitate discussion on the issues and solutions with Crown Infrastructure Partners Chief Executive Officer, Graham Mitchell, WIZWireless founder Bridget Canning, MBIE Senior Policy Advisor, Janelle Whittleston, and MBIE Policy Advisor Renee Duffell.



**Business:** KPMG Farm Enterprise Specialist, Julia Jones will facilitate a discussion on factors affecting farming along with input from Rabobank's Dairy Analyst of their RaboResearch Food and AGribuisness division, Emma Higgins, SME Principle Policy Advisor, Jon Cable and General Manager, Just Transitions, Gus Charteris both of MBIE.

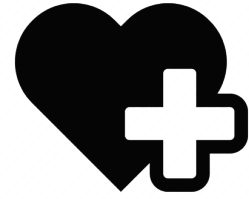


**International:** National President, Fiona Gower will facilitate this workshop with support from Beryl Anderson (former President of the National Council of Women) who has extensive experience in the UN Convention on the Elimination of all forms of Discrimination Against Women (CEDAW) and others on the Sustainable Development Goals and Universal Periodic Review of Human Rights in NZ.



**Education:** RWNZ will host a discussion on Education for our future with MBIE Future of Work Policy Director, Gerald Minnee, NZ Institute's Briar Lipson.

**Health:** RWNZ Board Member and Health Portfolio Convenor, Margaret Pittaway will facilitate discussion on rural health issues with the support of NZ College of Midwives CEO Karen Guilliland, Skylight Trust Chief Executive, Heather Henare, and Age Concern Chief Executive, Stephanie Clare.



**Environment:** Brian Monahan will facilitate a discussion with Landcare Trust Chief Executive Officer, Dr. Nick Edgar, Interim Climate Change Commission Chair, Dr. David Prentice and Pamu Head of Environment, Alison Dewes.

